



LENS DEFENDER™

PROTECTION SHIELD APPLICATION INSTRUCTIONS

For best results, use the Lens Defender Application and Removal Kit (LD-APP-REM-KIT) or carefully obtain the following items:

- (1) Lint Free Microfiber Cloth
- (1) Fine Mist Spray Bottle
- (1) Johnson's Baby Shampoo
- (1) Specialized Removal Pick
- (1) Plastic Squeegee - Large
- (1) Plastic Micro Squeegee - Small
- (1) Disposable Gloves

Before proceeding, fill spray bottle to the neck with distilled water and add 3 drops of baby shampoo to prepare application solution. Mix gently to avoid foaming.



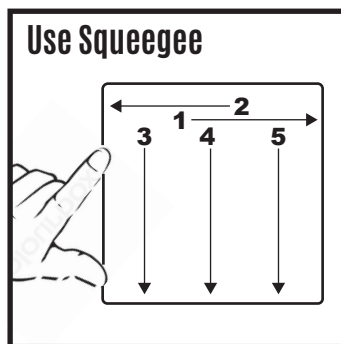
Step 1: Spray a generous amount of application solution to the pump display lens, and thoroughly clean using lint free cloth. Be sure to remove any and all dust particles from the surface.

Warning: If the existing display lens already contains scratches or other surface imperfections, a flawed installation will result.

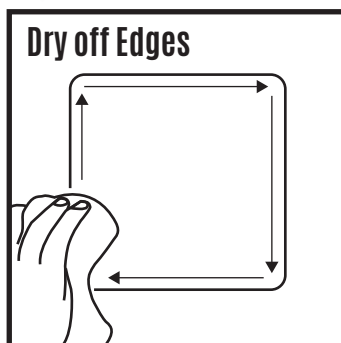
Warning: Do not attempt application in windy or rainy conditions as surface contamination is likely to occur during installation.



Step 2: Using disposable gloves, remove thin adhesive liner from the back side of the protection shield while spraying the adhesive liberally with application solution. This method prevents small dust particles in the air from clinging to the adhesive backing while it is momentarily left exposed. While holding the protection shield vertically, quickly spray the adhesive 3 to 4 more times, allowing water and possible contaminants to drip off before application.



Step 3: Position the protection shield on the intended display lens with the adhesive side against the lens surface. Without applying pressure to the protection shield, slide it into proper alignment. Then, use your fingers to pin either side while making a firm stroke with the squeegee along the top edge. Repeat in the opposite direction. With the top edge now secured to the display lens, remove all excess solution with long strokes from the top edge downward being careful not to trap any solution or contaminants.



Step 4: After you have applied pressure to the entire protection shield, it will be bonded to the display lens. Using a clean lint free absorbant cloth, dry off the protection shield and firmly push out remaining moisture along the edge using the squeegee and cloth.

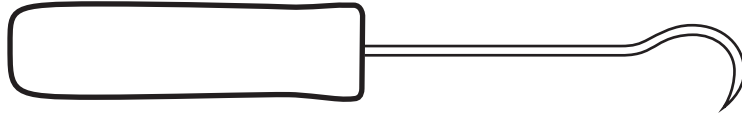
Note: Some moisture may remain along the edge of the protection shield until evaporation occurs. Allow 24 hours to pass before attempting to remove layers.



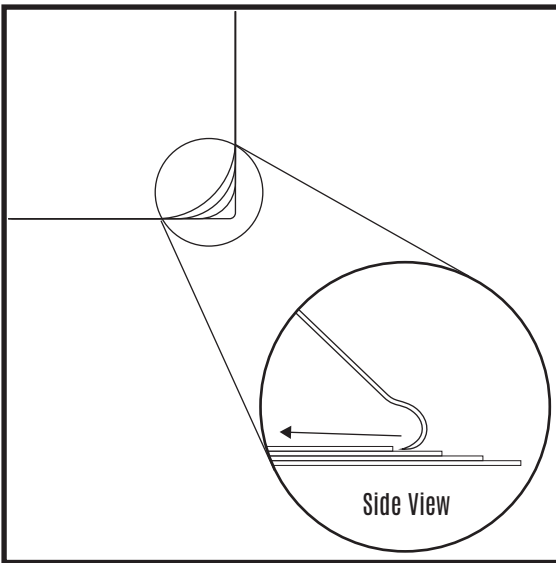
LENS DEFENDER™

MULTI LAYER REMOVAL INSTRUCTIONS

Use the Specialized Pick provided in the Application and Removal Kit (LD-APP-REM-KIT)
Or obtain a Rounded Hook Pick:



Method A



Removing Layers Using Stepped Edge

Locate stepped edge on the corner of defaced protection shield. If the protection shield does not have a stepped edge, refer to **Method B**.

Next, insert the removal pick under the top layer of film. Pull it horizontally until you displace the targeted layer while being careful not to damage the underlying layer or display lens.

Carefully grab the uplifted layer with your fingers and peel it back slowly.

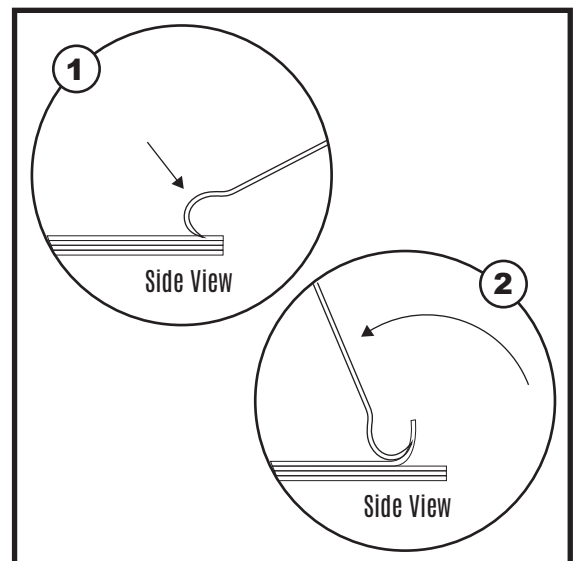
Method B

Removing Layers Without Stepped Edge

Press the sharp tip of the pick directly into the surface of the protection shield at a 45 degree angle as close to the corner as possible.

With the tip of the pick lodged in the top layer and facing the corner, rotate the pick backward using the rounded neck as a leverage point.

When the top layer displaces itself from the underlying layers, carefully grab it with your fingers and peel it back slowly.



Thank you for choosing Lens Defender™